

# USER INSTRUCTION

Wi-Fi 24Key RGBIC LED Controller



## LED mobile phone Bluetooth controller

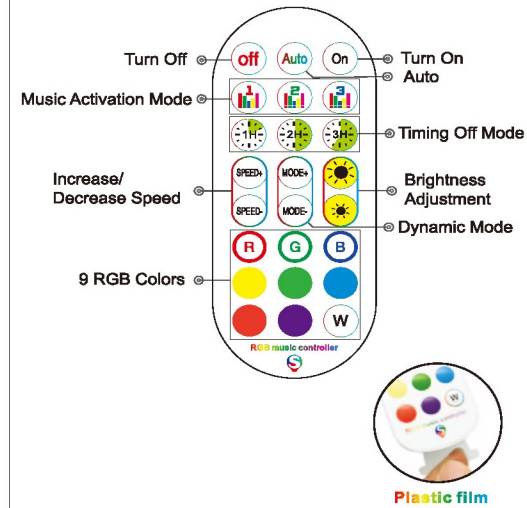
### Product Features

- Built-in Mem's microphone ,real-time acquisition of music and environmental sound intensity.
- Led Strip Light sync to music, contains a variety of musical rhythm modes.
- Infrared Remote Controller Control(Optional).
- Press key to switch color and mode.
- Control by TuyaSmart APP..
- Works with Amazon alexa and Google home and so on.
- Different color control of each group of LED point.
- The software shows that the text is based on the language of the mobile phone set up automatic transformation of Chinese,English and other local languages.

### Product Paramters

- Category : Led Controller
- SPI Strip Type : WS2811 WS2812
- Sound Sensor : Mem's MIC
- Input Voltage : DC(5-24) V
- APP : TuyaSmart
- IP Rating : IP20
- Language : Chines、 English、 Japanese、 German、 Italian、 Spanish and many more
- Operation Platform : Android 4.0 or IOS 9.0 or higher
- Set Up : Maximum can be 10 meters SPI driven strip, up to 200 pixels.
- Work For : Led Strip or other constant voltage lights
- Domination Principle : WiFi

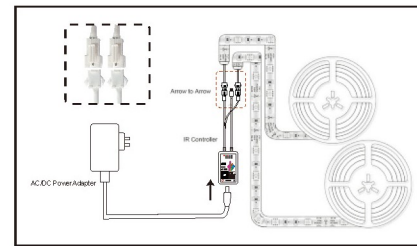
## Remoto Musical(Versión Avanzada)



## Controller Mode



## Wire Connection



## Software Manual Download and Install App

Use your phone to scan the QR code below or search "Tuya Smart " in application marker to Download and install the App

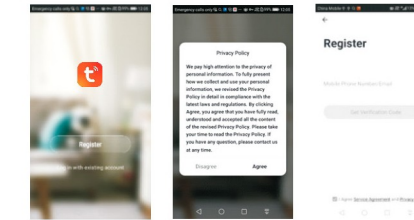


## Register/Login/Forget password

Register: Register your account to the following tips before using at the first time. If you have an account, please enter the password to login directly.

Login: Input the correct account number and password to login.

Forget your password: You can enter the login page to retrieve your password.

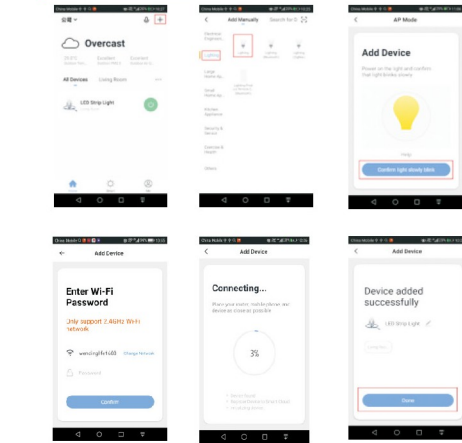


## Add Device-Normal mode

In the main application page, click on the top right corner "+" to next window page and then choose Lighting, as shown below. In normal mode, please confirm that the device red light is quickly blink and then into the next step.

**Note:**  
If the light is not flash, please power on your device, and then power off (repeat 3 times), until the red light will quickly blink, also you can long press the "ON" button of the infrared remote control (5-10seconds), until the red light will quickly blink.

If add the device in Normal mode fails many times, please go to [Add Device-AP mode](#)



## Add Device-AP mode

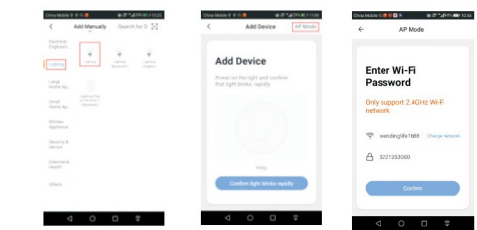
In the main application page, click on the top right corner "+" to next window page and then choose Lighting, as shown below.

In normal mode, click on the top right corner "AP Mode" to AP Mode window page.

In AP Mode, please confirm that the device red light is slowly blink and then into the next step.

**Note:**  
If the light in quickly blink, just press the controller with 5-10 seconds again, and the red light will slowly blink.

If the light neither slowly blink nor quickly blink. First press the "mode" key of the controller with 5-10 seconds to keep the red light in the quickly blink, Second release the button and then press the controller with 5-10 seconds again, the red light will slowly blink.

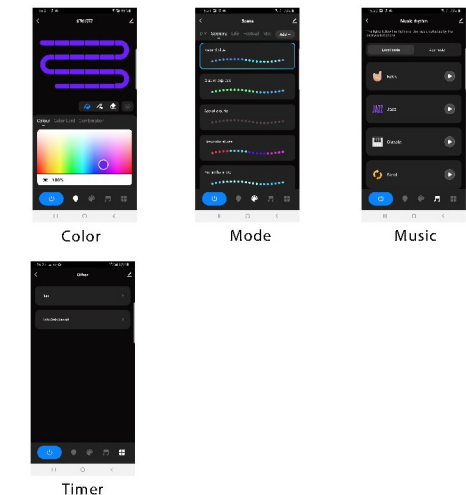


## Control devic

After successfully connecting the devices, the related smart device will be shown on the home page. Tap to enter its control page

### Note:

1. when device is online, it supports quick operations.
2. when device is offline, it displays "Offline" and can not be controlled.



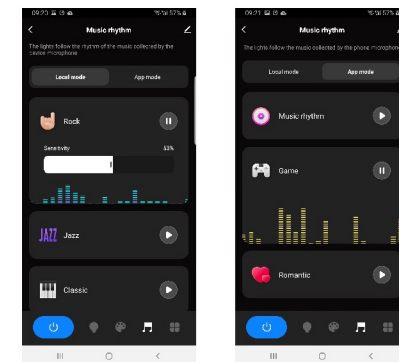
## LED Strip Light Sync to Music Function

Enter music mode and play music with any device, and the led strip light will sync to music

### Note:

The volume of mobile phone is relatively small, it's better to use Bluetooth audio

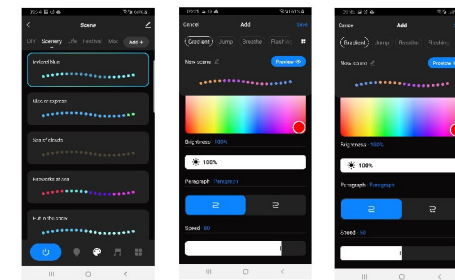
1. Customers can choose mobile phone microphone or device microphone according to different needs
2. Customers can choose different modes according to different scenarios.



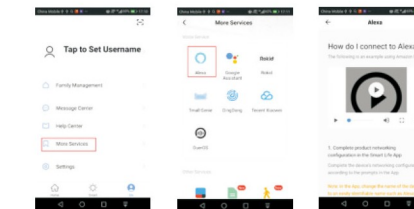
## LED Strip Light Mode Function

Customers choose their favorite mode according to the scene.

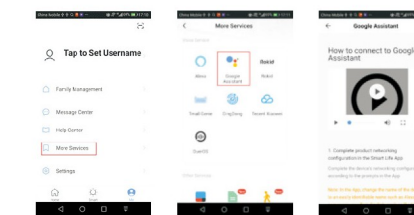
1. Click Edit in the top right corner to enter custom scene.
2. Customers can DIY their own mode according to their preferences.
3. You can add/delete/modify the color displayed and change the speed of color switching.
4. If you are not satisfied, you can reset the settings



## Works with Amazon Alexa

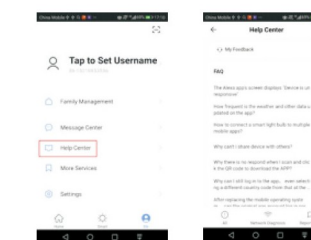


## Works with Google Assistant



## FAQ

1. How to reset the controller?  
Press the "mode" key of the controller with 5-10 seconds
2. How to get more help?



## Attentions

1. Please use the product in a dry environment.
2. Please use the input voltage at 4.5-25V DC voltage, must not connect into 220V AC directly.
3. In the process of the product and software upgrade, the data and software interface listed in the text are only for description and reference. No further notify will given if there is any change.



If you have any question after receiving the products, please contact our customer service, we will reply to you within 24 hours.

