

4-Key Panel RF Remote Controller

Model No.: HN2K



HN2K
2 Zone Dimming

Features

- Apply to single color
- Each remote can match one or more receiver.
- CR2032 battery powered.
- Removeable and stick anywhere easily, or mount on wall use panel base.

Technical Parameters

| Input and Output | |
|------------------|-------------------------|
| Output signal | RF(2.4GHz) |
| Working voltage | 3VDC(CR2032) |
| Working current | < 5mA |
| Standby current | < 2 μ A |
| Standby time | 2 years |
| Remote distance | 30m(Barrier-free space) |

| Environment | |
|-----------------------|---|
| Operation temperature | Ta: -30 $^{\circ}$ C ~ +55 $^{\circ}$ C |
| IP rating | IP20 |

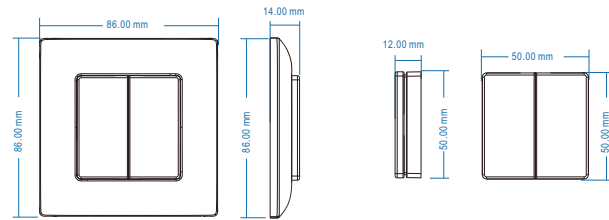
| Safety and EMC | |
|----------------------|---|
| EMC standard (EMC) | ETSI EN 301 489-1 V2.2.3 ETSI EN 301 489-17 V3.2.4 |
| Safety standard(LVD) | EN 62368-1:2020+A11:2020 |
| Radio Equipment(RED) | ETSI EN 300 328 V2.2.2 |
| Certification | CE,EMC, LVD, RED |

| Warranty | |
|----------|---------|
| Warranty | 3 years |

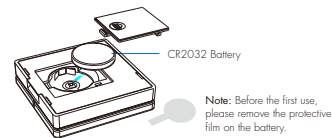
| Weight | |
|--------------|---------|
| Net weight | 0.057kg |
| Gross weight | 0.075kg |

CE RoHS LVD RED

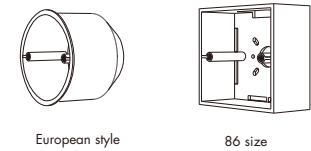
Mechanical Structures and Installations



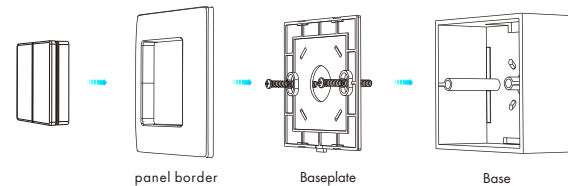
Replace battery:



Typical base as below:



Installation diagram:

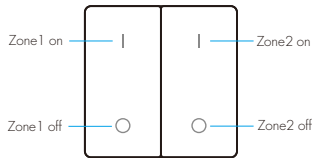


To fix the panel, two options are offered for selection:

Option 1: fix it on the wall with two screws.

Option 2: adhere it to the wall with pasteur.

Key function



Zone 1-2 on:

Short press turn on zone light,
long press 1-6s to increase brightness continuously.

Zone 1-2 off:

Short press turn off zone light,
long press 1-6s to decrease brightness continuously.

Match Remote Control (two match ways)

End user can choose the suitable match/delete ways. Two options are offered for selection:

Use the controller's Match key

Match:

Short press match key, immediately press on/off key on the remote.
The LED indicator fast flash a few times means match is successful.

Delete:

Press and hold match key for 5s to delete all match,
The LED indicator fast flash a few times means all matched remotes were deleted.

Use Power Restart

Match:

Switch off the power, then switch on power, repeat again.
Immediately short press on/off key 3 times on the remote.
The light blinks 3 times means match is successful.

Delete:

Switch off the power, then switch on power, repeat again.
Immediately short press on/off key 5 times on the remote.
The light blinks 5 times means all matched remotes were deleted.

Safety information

1. Read all instructions carefully before you begin this installation.
2. When installing battery, pay attention to the battery positive and negative polarity.
A long time without the remote control, remove the battery.
When remote distance becomes smaller and insensitive, replace the battery.
3. If no response from the receiver, please re-match the remote.
4. Gently handle remote, beware of falling.
5. For indoor and dry location use only.